

Schlumberger

Company:

Vulcan Minerals Inc.

Well:

Storm #1

Field:

Undefined

Province:

Newfoundland

Location:

UTM (NAD 27)

Well:

Storm #1

Company:

Vulcan Minerals Inc.

Dipole Shear Sonic Imager

LOCATION

UTM (NAD 27)
Northing: 5363895; Easting: 393475

Permanent Datum:
Log Measured From:
Drilling Measured From:

Elev.:
K.B.
G.L.
D.F.

97.92 m
95 m
97.92 m

Ground Level
Rig Floor
Rig Floor

2.9 m
above Perm. Datum

API Serial No.

Northing
5363895

Easting
393475

Logging Date	11-Aug-2005		
Run Number	1		
Depth Driller	880.5 m		
Schlumberger Depth	600 m		
Bottom Log Interval	592 m		
Top Log Interval	540 m		
Casing Driller Size @ Depth	177.800 mm	@	250 m
Casing Schlumberger	250 m		
Bit Size	156.000 mm		
Type Fluid In Hole	Fresh mud		
Density	Viscosity	1140 kg/m3	35 s
Fluid Loss	PH		
Source Of Sample	Mud tank		
RM @ Measured Temperature	1.180 ohm.m	@	18 degC
RMF @ Measured Temperature		@	
RMC @ Measured Temperature		@	
Source RMF	RMC		
RM @ MRT	RMF @ MRT	1.313 @ 14	@ 14
Maximum Recorded Temperatures	14 degC		@
Circulation Stopped	Time	11-Aug-2005	10:00
Logger On Bottom	Time	11-Aug-2005	17:30
Unit Number	Location	3009 Dartmouth	
Recorded By		Andrea Doyle	
Witnessed By		Karla Smith	

[illegible][illegible][illegible][illegible][illegible]

DEPTH SUMMARY LISTING

Depth System Equipment	
------------------------	--

Depth Control Parameters	
--------------------------	--

Depth Control Remarks

DISCLAIMER

THE USE OF AND RELIANCE UPON THIS RECORDED-DATA BY THE HEREIN NAMED COMPANY (AND ANY OF ITS AFFILIATES, PARTNERS, REPRESENTATIVES, AGENTS, CONSULTANTS AND EMPLOYEES) IS SUBJECT TO THE TERMS AND CONDITIONS AGREED UPON BETWEEN SCHLUMBERGER AND THE COMPANY, INCLUDING: (a) RESTRICTIONS ON USE OF THE RECORDED-DATA; (b) DISCLAIMERS AND WAIVERS OF WARRANTIES AND REPRESENTATIONS REGARDING COMPANY'S USE OF AND RELIANCE UPON THE RECORDED-DATA; AND (c) CUSTOMER'S FULL AND SOLE RESPONSIBILITY FOR ANY INFERENCE DRAWN OR DECISION MADE IN CONNECTION WITH THE USE OF THIS RECORDED-DATA.

REMARKS: RUN NUMBER 1	REMARKS: RUN NUMBER 2
Data acquired prior to fishing job for logging tools.	
Bottom of tool was at 586m when stuck.	
Tool was determined to be stuck at the tool by using	
LEH-QT head tension (3000 lbs while stuck).	
Toolstring run as per tool sketch.	
Logs run on a sandstone matrix	

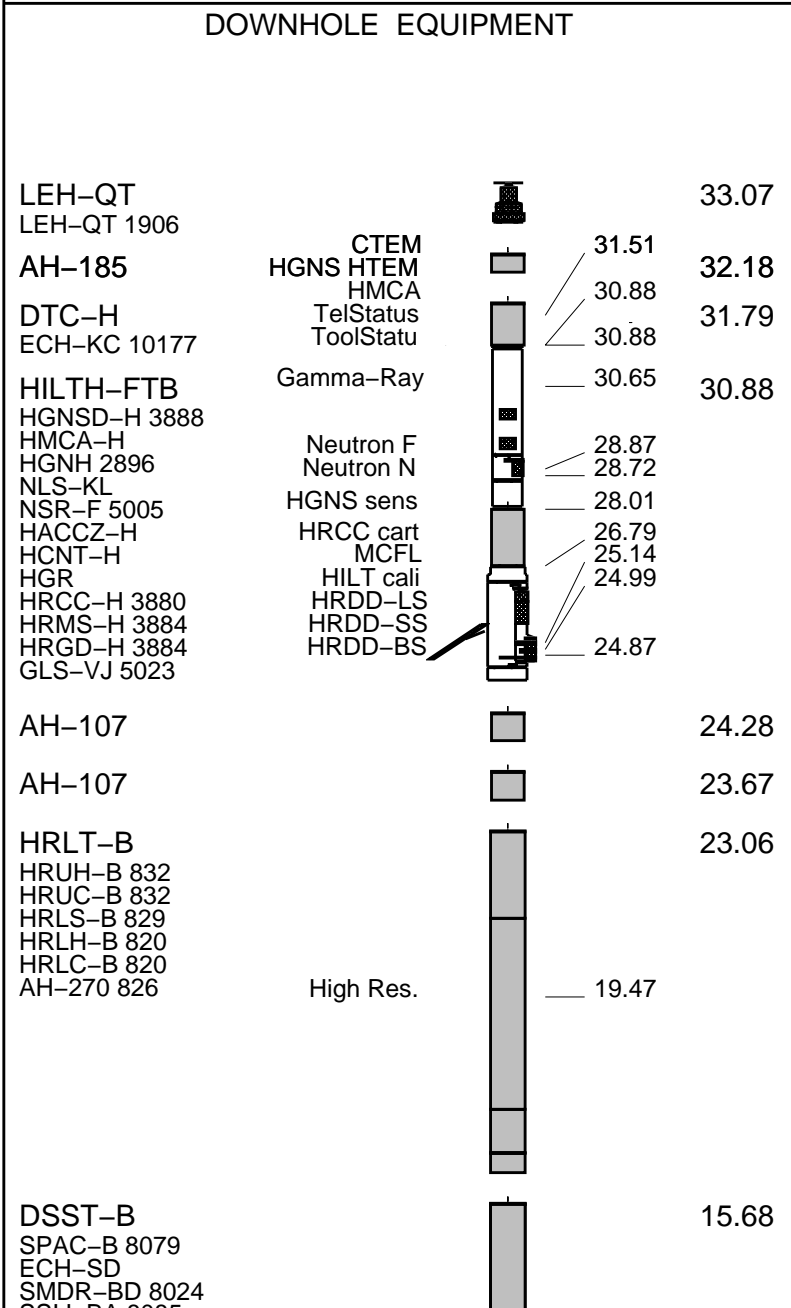
(MDEN=2650 kg/m^3, DTM=183 us/ft).

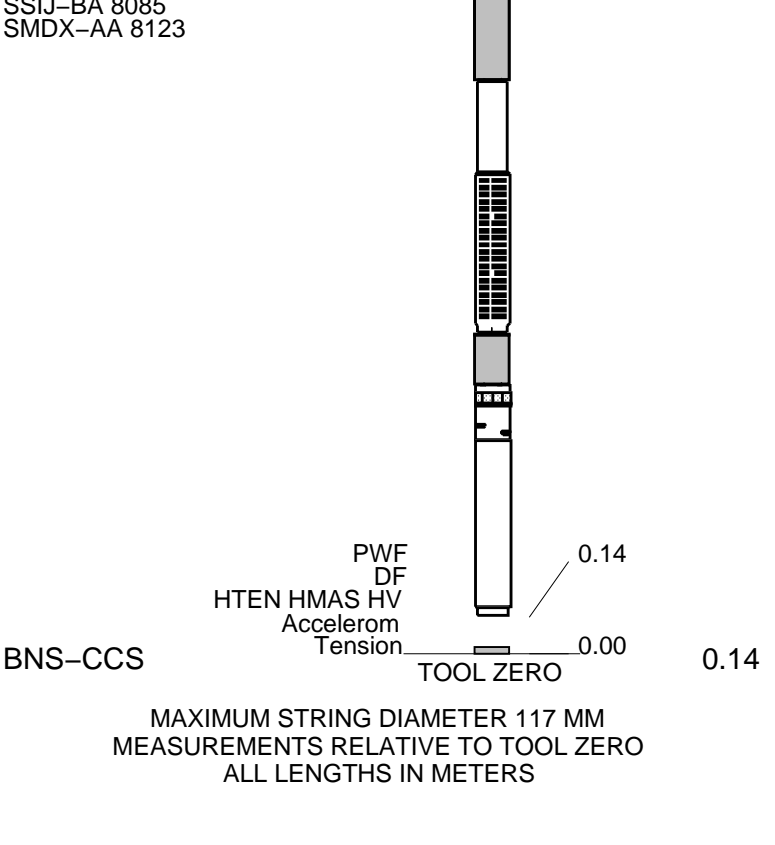
DSI monopole logged in P&S mode.					
Dartmouth District: 902-468-6474					
Crew: Steve Beaton, Harry Creemer					
RUN 1			RUN 2		
SERVICE ORDER #:		11033559	SERVICE ORDER #:		
PROGRAM VERSION:		13C0-300	PROGRAM VERSION:		
FLUID LEVEL:		60 m	FLUID LEVEL:		
LOGGED INTERVAL	START	STOP	LOGGED INTERVAL	START	STOP

EQUIPMENT DESCRIPTION					
RUN 1			RUN 2		

SURFACE EQUIPMENT
WITM (DTS)-A

GSR-U/Y
NCT-B
CNB-AB
NCS-VB





P & S VDL
1:240

MAXIS Field Log

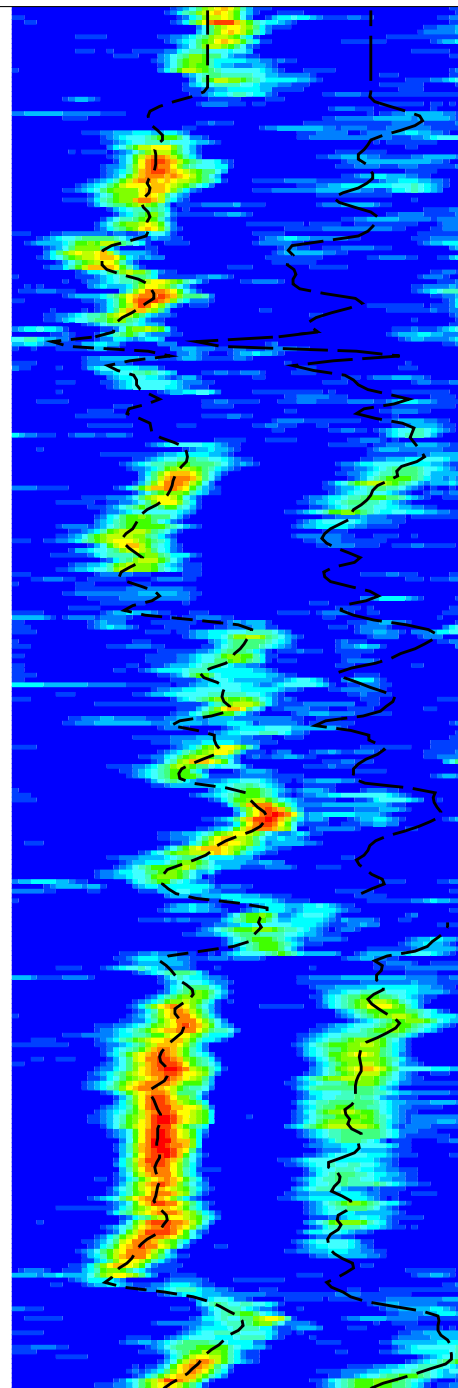
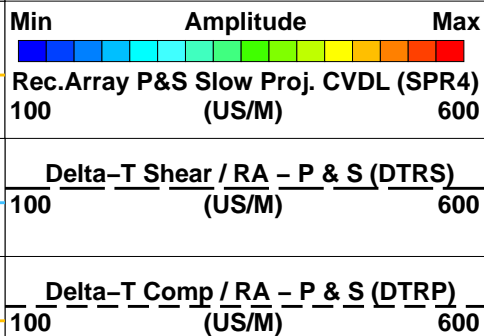
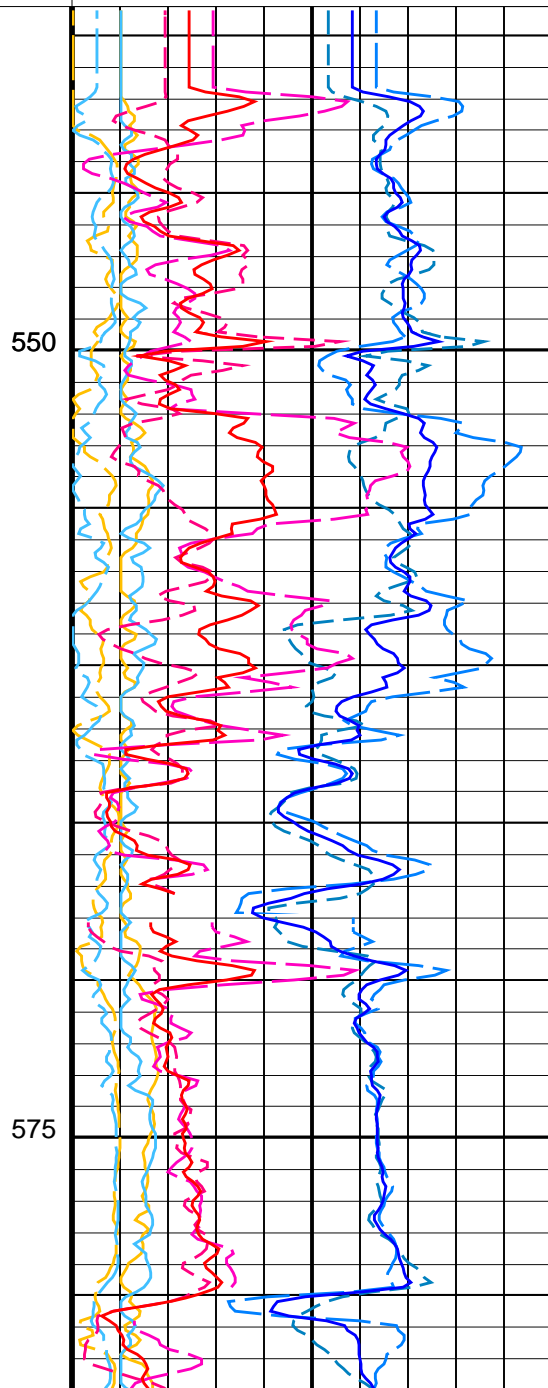
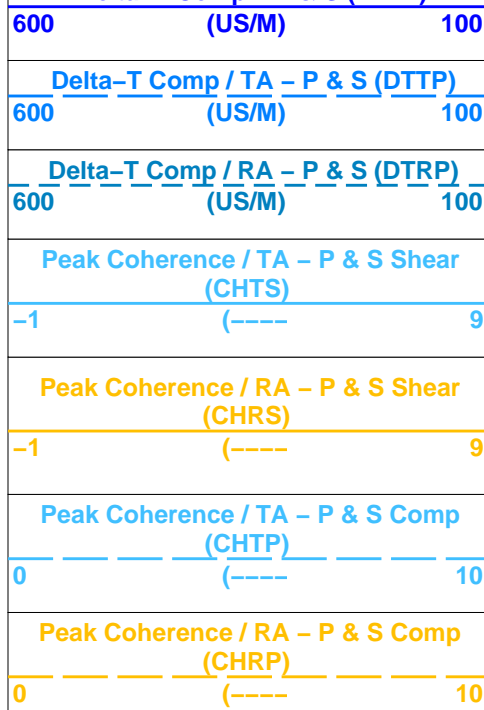
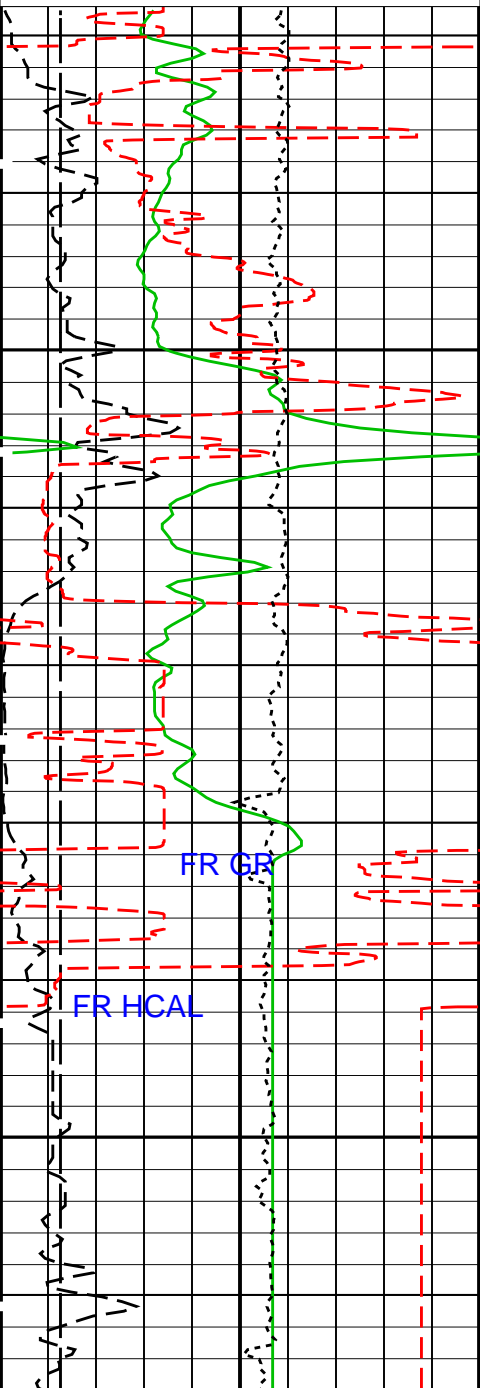
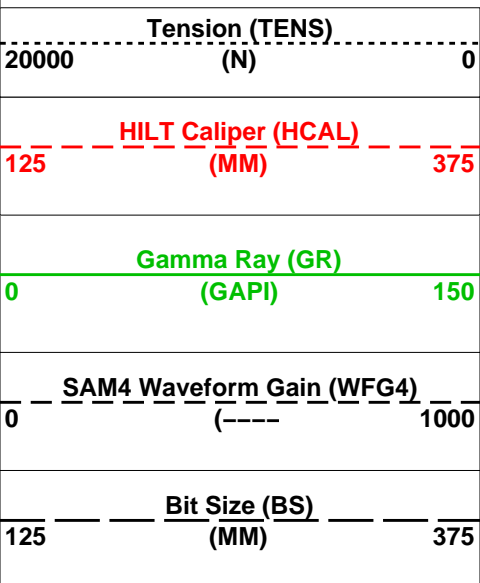
Company: Vulcan Minerals Inc. Well: Storm #1

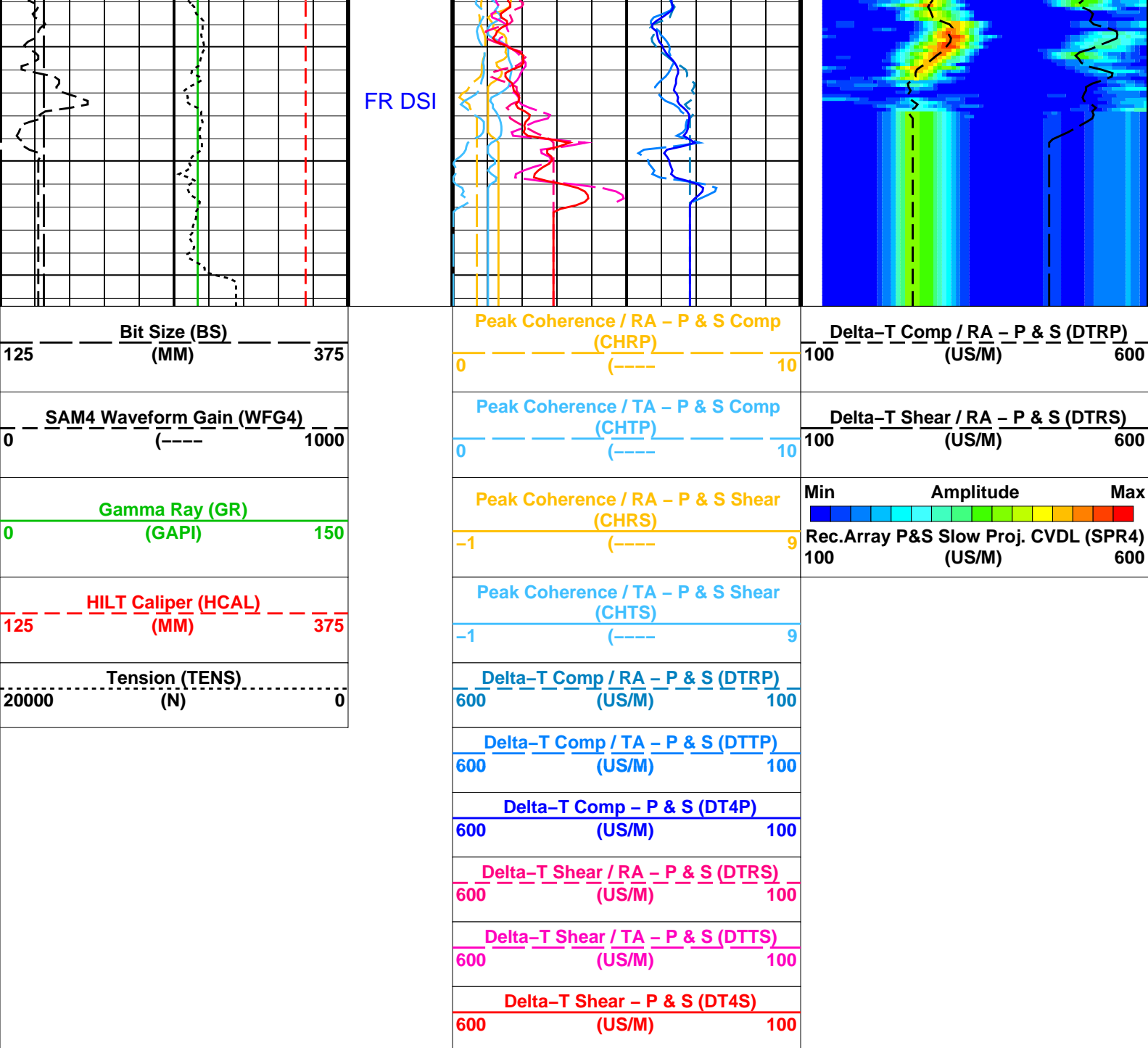
Input DLIS Files						
DEFAULT	MERGE_DSI_HRLA_TLD_025	FN:1	PRODUCER	13-Aug-2005 13:31	596.3 M	538.3 M
Output DLIS Files						
DEFAULT	DSI_HRLA_TLD_MCFL_041PUP	FN:39	PRODUCER	13-Aug-2005 18:26		
OP System Version: 13C0-300						
MCM						
DSST-B	13C0-300		HRLT-B	13C0-300		
HILTH-FTB	SRPC-2788-HILT		DTC-H	13C0-300		

PIP SUMMARY

Time Mark Every 60 S

Delta-T Shear - P & S (DT4S)		
600	(US/M)	100
Delta-T Shear / TA - P & S (DTTS)		
600	(US/M)	100
Delta-T Shear / RA - P & S (DTRS)		
600	(US/M)	100
Delta-T Comp - P & S (DT4P)		





PIP SUMMARY

Time Mark Every 60 S

Parameters

DLIS Name	Description	Value
DSST-B: Dipole Shear Imager - B		
BHS	Borehole Status	OPEN
CASF	Label Casing Function - Monopole P&S	50
COLL	Label Slowness Lower Limit - Monopole P&S Compressional	131.234 US/M
COUL	Label Slowness Upper Limit - Monopole P&S Compressional	590.551 US/M
DDE4	Digitizing Delay 4	0 US
DDEX	Digitizing Delay X	0 US
DSI4	Digitizer Sample Interval 4	10 US
DSIX	Digitizer Sample Interval X	40 US
DTF	Delta-T Fluid	620.079 US/M
DWC4	Digitizer Word Count 4	512
DWCX	Digitizer Word Count X	512
FILG	Label Fill Gap Control - Monopole P&S	COMP_SHEAR
LFC	Label Formation Character - Monopole P&S	DYNAMIC
MCS	Mean Casing Slowness	187.008 US/M
MTXG	Monopole Transmitter Geometry	4724 MM
NWI4	Number Waveform Items 4	8
NWIX	Number Waveform Items X	0

RSMN	Label Shear/Compressional Minimum Ratio – Monopole P&S	1.4	
RSMX	Label Shear/Compressional Maximum Ratio – Monopole P&S	2.12	
RX1G	Receiver 1 Geometry	7468	MM
RX2G	Receiver 2 Geometry	7620	MM
RX3G	Receiver 3 Geometry	7772	MM
RX4G	Receiver 4 Geometry	7925	MM
RX5G	Receiver 5 Geometry	8077	MM
RX6G	Receiver 6 Geometry	8230	MM
RX7G	Receiver 7 Geometry	8382	MM
RX8G	Receiver 8 Geometry	8534	MM
SAM4	DSST Sonic Acquisition Mode 4 – High Frequency Monopole Mode for P&S	ODD	
SAMX	DSST Sonic Acquisition Mode X – Both Dipoles or Monopole Mode for Expert	OFF	
SAS4	STC Sonic Array Status – Monopole P&S	255	
SBO4	STC Search Band Offset – Monopole P&S	500	US
SBR4	STC Baseline Removal – Monopole P&S	ON	
SBW4	STC Search Bandwidth – Monopole P&S	2000	US
SFC4	STC Formation Character – Monopole P&S	SELECTABLE	
SFM4	STC Filter – Monopole P&S	B3–20K	
SHLL	Label Slowness Lower Limit – Monopole P&S Shear	246.063	US/M
SHUL	Label Slowness Upper Limit – Monopole P&S Shear	590.551	US/M
SLL4	STC Slowness Lower Limit – Monopole P&S	131.234	US/M
SST4	STC Slowness Step – Monopole P&S	6.56168	US/M
SSW4	STC Source Waveform – Monopole P&S	WF_SAM4	
STLL	Label Slowness Lower Limit – Monopole Stoneley	590.551	US/M
STUL	Label Slowness Upper Limit – Monopole Stoneley	2559.06	US/M
SUL4	STC Slowness Upper Limit – Monopole P&S	787.402	US/M
SWD4	STC Slowness Width – Monopole P&S	32.8084	US/M
TBF4	STC Time for Baseline Fill – Monopole P&S	300	US
TLL4	STC Time Lower Limit – Monopole P&S	150	US
TST4	STC Time Step – Monopole P&S	50	US
TUL4	STC Time Upper Limit – Monopole P&S	3660	US
TWD4	STC Time Width – Monopole P&S	1000	US
TWI4	STC Integration Time Window – Monopole P&S	500	US
TWSX	Transmitter Waveform Select X	0	
WFM4	Waveform Mode 4	W1	
BHS	HRLT–B: High Resolution Laterolog Array – E Borehole Status	OPEN	
BHS	HILTH–FTB: High resolution Integrated Logging Tool–DTS Borehole Status	OPEN	
BS	System and Miscellaneous Bit Size	156.000	MM
DO	Depth Offset for Playback	0.0	M
PP	Playback Processing	RECOMPUTE	

Format: DSST_P_S_VDL_COLOR Vertical Scale: 1:240 Graphics File Created: 13–Aug–2005 18:26

OP System Version: 13C0–300

MCM

DSST–B	13C0–300	HRLT–B	13C0–300
HILTH–FTB	SRPC–2788–HILT	DTC–H	13C0–300

Input DLIS Files

DEFAULT	MERGE_DSI_HRLA_TLD_025	FN:1	PRODUCER	13–Aug–2005 13:31	596.3 M	538.3 M
---------	------------------------	------	----------	-------------------	---------	---------

Output DLIS Files

DEFAULT	DSI_HRLA_TLD_MCFL_041PUP	FN:39	PRODUCER	13–Aug–2005 18:26
---------	--------------------------	-------	----------	-------------------

Schlumberger

MAIN PASS
1:240

MAXIS Field Log

Input DLIS Files

DEFAULT MERGE_DSI_HRLA_TLD_025 FN:1 PRODUCER 13-Aug-2005 13:31 596.3 M 538.3 M

Output DLIS Files

DEFAULT DSI_HRLA_TLD_MCFL_041PUP FN:39 PRODUCER 13-Aug-2005 18:26

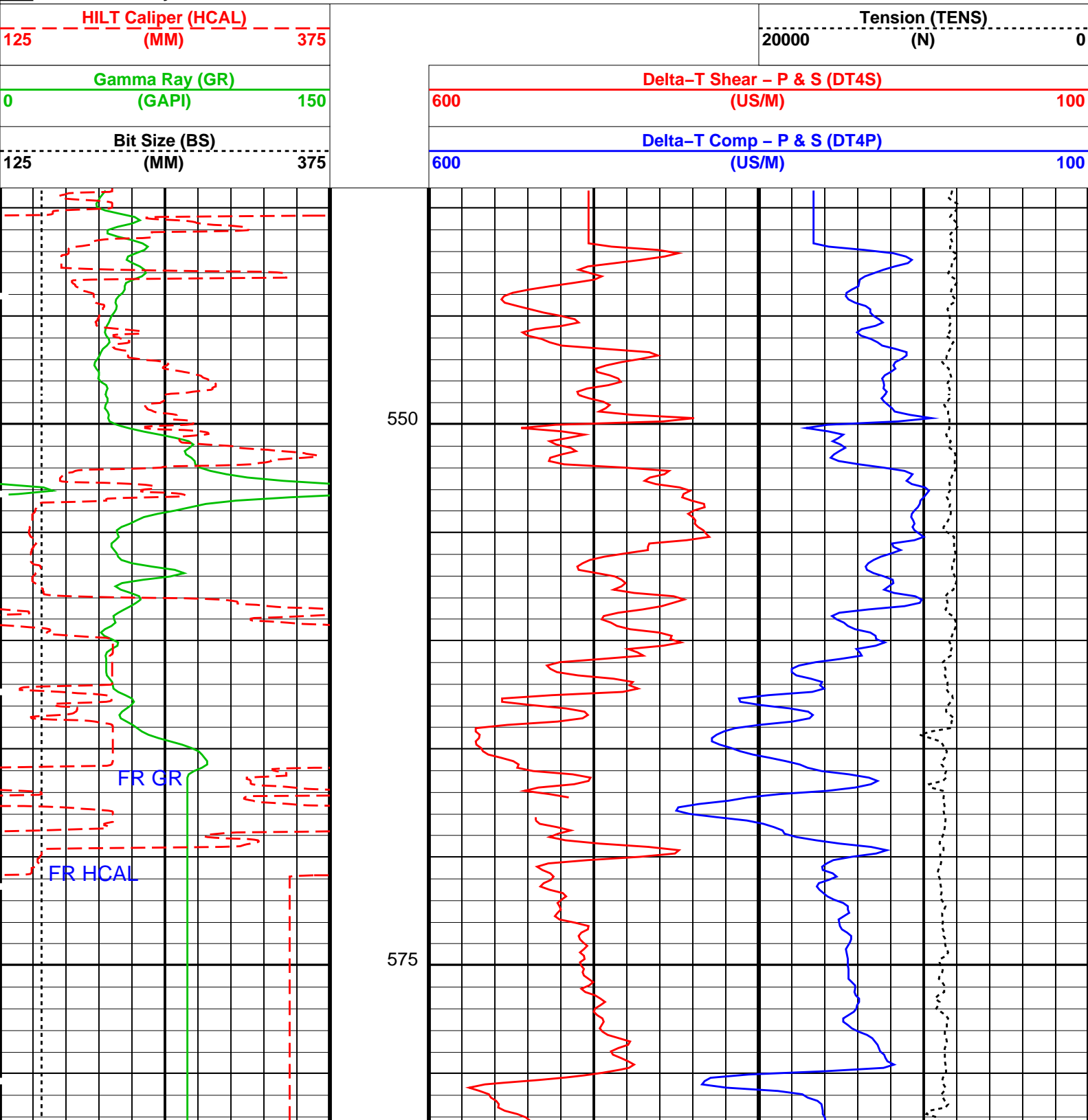
OP System Version: 13C0-300

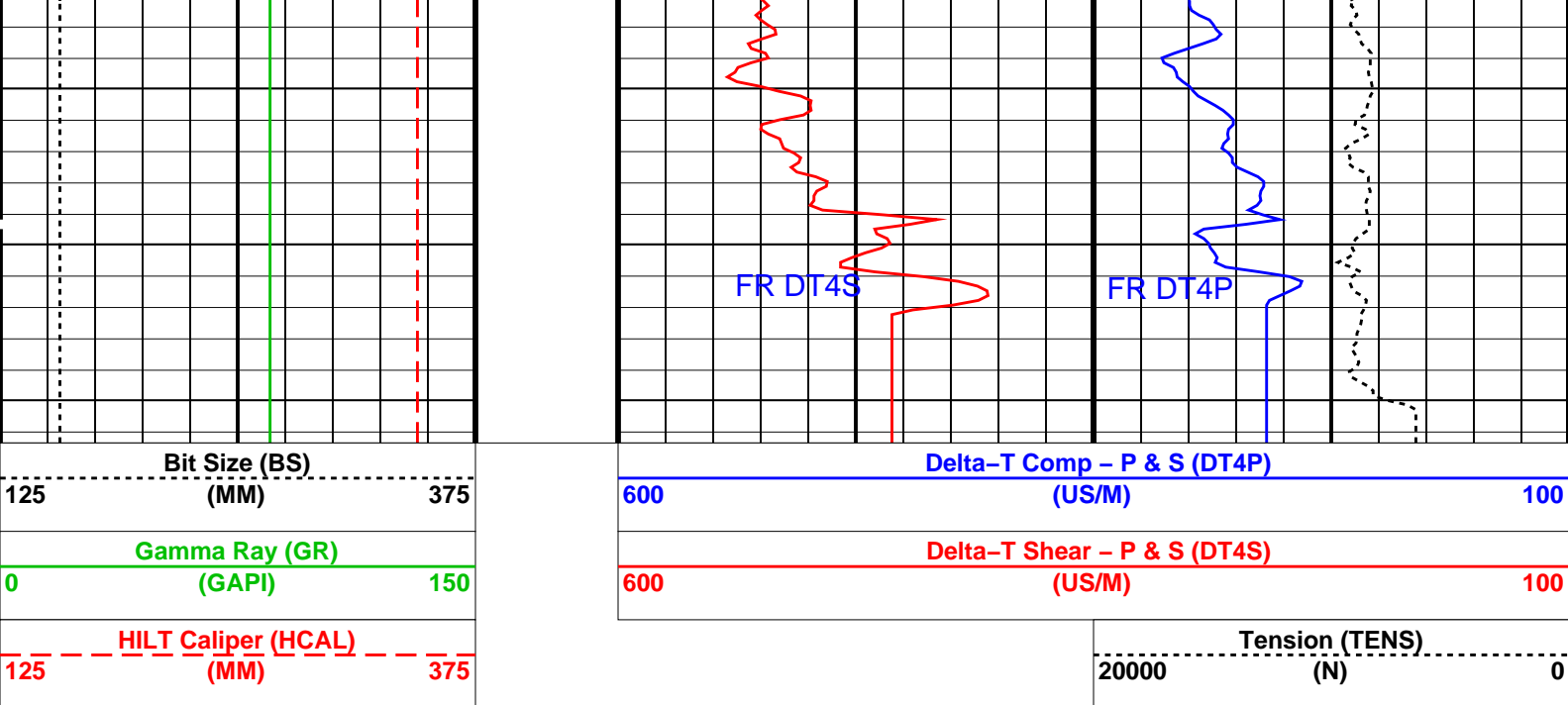
MCM

DSST-B 13C0-300 HRLT-B 13C0-300
HILTH-FTB SRPC-2788-HILT DTC-H 13C0-300

PIP SUMMARY

Time Mark Every 60 S





PIP SUMMARY

Time Mark Every 60 S

Parameters

DLIS Name	Description	Value	
DSST-B: Dipole Shear Imager – B			
RX1G	Receiver 1 Geometry	7468	MM
RX2G	Receiver 2 Geometry	7620	MM
RX3G	Receiver 3 Geometry	7772	MM
RX4G	Receiver 4 Geometry	7925	MM
RX5G	Receiver 5 Geometry	8077	MM
RX6G	Receiver 6 Geometry	8230	MM
RX7G	Receiver 7 Geometry	8382	MM
RX8G	Receiver 8 Geometry	8534	MM
System and Miscellaneous			
BS	Bit Size	156.000	MM
DO	Depth Offset for Playback	0.0	M
PP	Playback Processing	RECOMPUTE	

Format: SONI_DSI Vertical Scale: 1:240 Graphics File Created: 13-Aug-2005 18:26

OP System Version: 13C0-300

MCM

DSST-B	13C0-300	HRLT-B	13C0-300
HILTH-FTB	SRPC-2788-HILT	DTC-H	13C0-300

Input DLIS Files

DEFAULT	MERGE_DSI_HRLA_TLD_025	FN:1	PRODUCER	13-Aug-2005 13:31	596.3 M	538.3 M
---------	------------------------	------	----------	-------------------	---------	---------

Output DLIS Files

DEFAULT	DSI_HRLA_TLD_MCFL_041PUP	FN:39	PRODUCER	13-Aug-2005 18:26
---------	--------------------------	-------	----------	-------------------

Schlumberger

CALIBRATIONS

DSST Electronics Check (Sum) – Matching Status

	R1	R2	R3	R4	R5	R6	R7	R8
EVEN Pair								
ODD Pair								
ODD/EVEN								



= Good



= Marginal



= Bad

DSST Electronics Check (Diff) – Matching Status

	R1	R2	R3	R4	R5	R6	R7	R8
EVEN Pair								
ODD Pair								
ODD/EVEN								

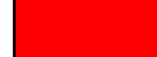




= Good



= Marginal



= Bad

Graphics File Name: EC_DIFF_CHK.PDS

Graphics File Created: 11-Aug-2005 16:24

DSST Receiver Check – Matching Status

	R1	R2	R3	R4	R5	R6	R7	R8
EVEN Pair								
ODD Pair								
ODD/EVEN								



= Good



= Marginal



= Bad

Graphics File Name: RECEIVER_CHK.PDS

Graphics File Created: 11-Aug-2005 16:32

Company: **Vulcan Minerals Inc.**

Schlumberger

Well: **Storm #1**

Field: **Undefined**

Province: **Newfoundland**

Location: **Stephenville**

Dipole Shear Sonic Imager